

\$89,900 - 25 De Havilland Boulevard Sw, Medicine Hat

MLS® #A2259167

\$89,900

2 Bedroom, 1.00 Bathroom, 1,001 sqft

Mobile on 0.00 Acres

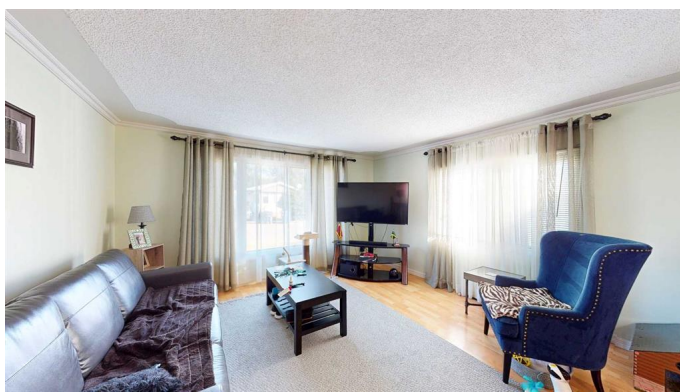
SW Hill, Medicine Hat, Alberta

Beautiful Tower Estates mobile home on nicely landscaped lot. Three tier deck on sloping fenced yard. One deck partially covered. Spacious entrance with attached den that could easily be a third bedroom. New siding with an additional 2 inches of insulation, newer central air, new hot water tank, new flooring are just a few if the upgrades. 100 amp service and services under mobile have been arranged to prevent future issues and are now inside. Windows are vinyl, mirror closet doors, laundry in bath, two larger bedrooms, plus den, sculpted ceiling and door ways, three ceiling fans are all additional features. The asphalt driveway is newer and could host three vehicles or a small RV. The island kitchen has built in appliances and lots of cupboards. This home is light and airy and spotlessly clean. Ask your favourite Agent to bring you through.

Built in 1975

Essential Information

MLS® #	A2259167
Price	\$89,900
Bedrooms	2
Bathrooms	1.00
Full Baths	1
Square Footage	1,001
Acres	0.00
Year Built	1975



Type	Mobile
Sub-Type	Mobile
Style	Single Wide Mobile Home
Status	Active

Community Information

Address	25 De Havilland Boulevard Sw
Subdivision	SW Hill
City	Medicine Hat
County	Medicine Hat
Province	Alberta
Postal Code	T1A7Y6

Amenities

Utilities	Electricity Connected, Garbage Collection, Natural Gas Connected, Sewer Connected, Water Connected
Parking Spaces	3
Parking	Asphalt, Driveway, Off Street, Parking Pad

Interior

Interior Features	Ceiling Fan(s), Kitchen Island, Storage, Vinyl Windows
Appliances	Built-In Electric Range, Built-In Oven, Central Air Conditioner, Dishwasher, Microwave, Refrigerator, Washer/Dryer, Window Coverings
Heating	Floor Furnace
Cooling	Central Air

Exterior

Exterior Features	Private Yard, Storage
Lot Description	Back Yard, Few Trees, Gentle Sloping, Landscaped, Low Maintenance Landscape
Roof	Asphalt Shingle
Foundation	Piling(s)

Additional Information

Date Listed	September 21st, 2025
-------------	----------------------

Listing Details

Listing Office	ROYAL LEPAGE COMMUNITY REALTY
----------------	-------------------------------

Data is supplied by Pillar 9â„¢ MLSÂ® System. Pillar 9â„¢ is the owner of the copyright in its MLSÂ® System. Data is deemed reliable but is not guaranteed accurate by Pillar 9â„¢. The trademarks MLSÂ®, Multiple Listing ServiceÂ® and

the associated logos are owned by The Canadian Real Estate Association (CREA) and identify the quality of services provided by real estate professionals who are members of CREA. Used under license.