

\$639,999 - 108 Jensen Place Ne, Airdrie

MLS® #A2258501

\$639,999

4 Bedroom, 3.00 Bathroom, 1,253 sqft

Residential on 0.18 Acres

Jensen, Airdrie, Alberta

WELCOME to 108 Jensen Place—a beautiful bi-level home nestled in the desirable and established neighborhood in JENSEN ESTATES. With over 2,200 sq ft of developed living space, this residence is set on a spacious 65x130 corner lot, with MATURE FRUIT & BERRY TREES surrounding the property, offering exceptional privacy—a RARE FIND.

The extra-large garage (29.4â€™™ x 23.5â€™™) offers ample space for multiple vehicles, generous storage, or a dedicated workshop area, making it perfect for car enthusiasts, hobbyists, or families seeking versatility.

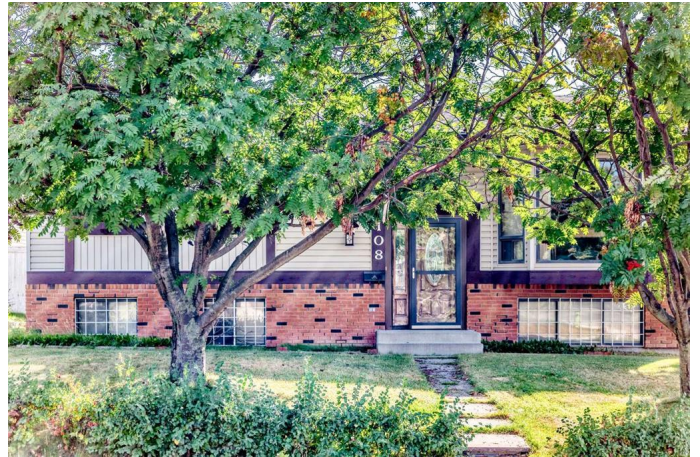
The main floor features a SPACIOUS kitchen and an inviting living area with a COZY FIREPLACE located on a feature wall, perfect for gatherings with friends and family. Lower Level offers a walk-up entry, an additional bedroom, 2 flex rooms, 3-piece bathroom and a large family room with a wet bar, ideal for entertaining guests or relaxing with family. This home is within walking distance to the TRI-SCHOOL AREA, close to Main Street amenities, and provides easy access to Highway 2â€™™both north and southbound. Donâ€™™t miss your opportunity to own this exceptional property in Jensen Estates!

Built in 1979

Essential Information

MLS® #

A2258501



Price	\$639,999
Bedrooms	4
Bathrooms	3.00
Full Baths	3
Square Footage	1,253
Acres	0.18
Year Built	1979
Type	Residential
Sub-Type	Detached
Style	Bi-Level
Status	Active

Community Information

Address	108 Jensen Place Ne
Subdivision	Jensen
City	Airdrie
County	Airdrie
Province	Alberta
Postal Code	T4B1P2

Amenities

Parking Spaces	2
Parking	Double Garage Detached
# of Garages	2

Interior

Interior Features	Laminate Counters, Bar
Appliances	Dishwasher, Electric Stove, Garage Control(s), Refrigerator, Washer/Dryer
Heating	Forced Air
Cooling	None
Fireplace	Yes
# of Fireplaces	2
Fireplaces	Brick Facing, Gas
Has Basement	Yes
Basement	Finished, Full

Exterior

Exterior Features	Storage
-------------------	---------

Lot Description	Corner Lot, Many Trees
Roof	Asphalt Shingle
Construction	Brick, Concrete, Aluminum Siding
Foundation	Poured Concrete

Additional Information

Date Listed	September 22nd, 2025
Days on Market	1
Zoning	R1

Listing Details

Listing Office	Legacy Real Estate Services
----------------	-----------------------------

Data is supplied by Pillar 9â„¢ MLS® System. Pillar 9â„¢ is the owner of the copyright in its MLS® System. Data is deemed reliable but is not guaranteed accurate by Pillar 9â„¢. The trademarks MLS®, Multiple Listing Service® and the associated logos are owned by The Canadian Real Estate Association (CREA) and identify the quality of services provided by real estate professionals who are members of CREA. Used under license.