

# \$249,900 - 262 Southmore Place, Blairmore

---

MLS® #A2245659

**\$249,900**

0 Bedroom, 0.00 Bathroom,  
Land on 0.22 Acres

NONE, Blairmore, Alberta

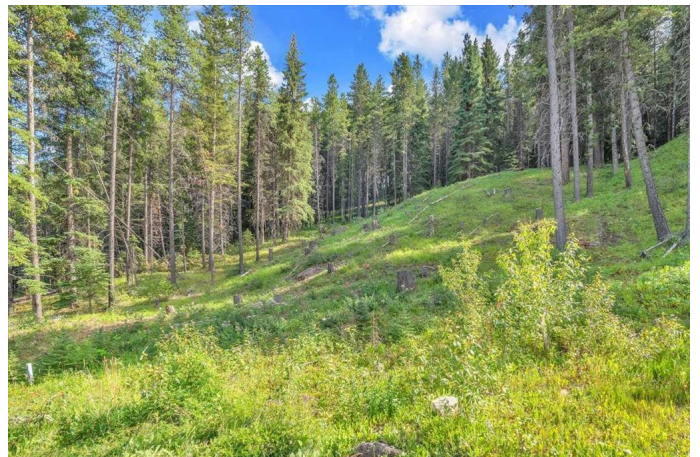
Welcome to Mountain Living! Located in the Heart of Blairmore, in the desirable Southmore Subdivision, 65 x 150 sq.ft. serviced lot offers a great opportunity to build in the scenic Crowsnest Pass. The lot is cleared, serviced and ready for development, whenever you are, with no time line for building. Zoned CVS, it allows for short-term rentals, giving you flexibility whether you're building your dream home, vacation property or investment rental. Nestled in the charming mountain community known for it year-round outdoor recreation, Blairmore provides access to hiking, fishing, skiing and more, all set against a backdrop of stunning natural beauty. Whether you're looking to settle down or create a weekend retreat or Investment this lot delivers space, convenience and breathtaking surroundings. A Prime Lot with Tons of Potential!

## Essential Information

MLS® #	A2245659
Price	\$249,900
Bathrooms	0.00
Acres	0.22
Type	Land
Sub-Type	Residential Land
Status	Active

## Community Information

Address 262 Southmore Place



Subdivision	NONE
City	Blairmore
County	Crowsnest Pass
Province	Alberta
Postal Code	T0K 0E0

### **Additional Information**

Date Listed	August 7th, 2025
Days on Market	3
Zoning	CSV

### **Listing Details**

Listing Office	RE/MAX Complete Realty
----------------	------------------------

Data is supplied by Pillar 9â„¢ MLS® System. Pillar 9â„¢ is the owner of the copyright in its MLS® System. Data is deemed reliable but is not guaranteed accurate by Pillar 9â„¢. The trademarks MLS®, Multiple Listing Service® and the associated logos are owned by The Canadian Real Estate Association (CREA) and identify the quality of services provided by real estate professionals who are members of CREA. Used under license.