

\$150,000 - 141 Speargrass Close, Carseland

MLS® #A2243701

\$150,000

0 Bedroom, 0.00 Bathroom,
Land on 0.23 Acres

NONE, Carseland, Alberta

BYOB™ Bring Your Own Builder! This pie-shaped lot sits right on the 5th tee box of Speargrass Golf Course, giving you a front-row seat to the action and the views.

Here™s what makes this community a hole-in-one:

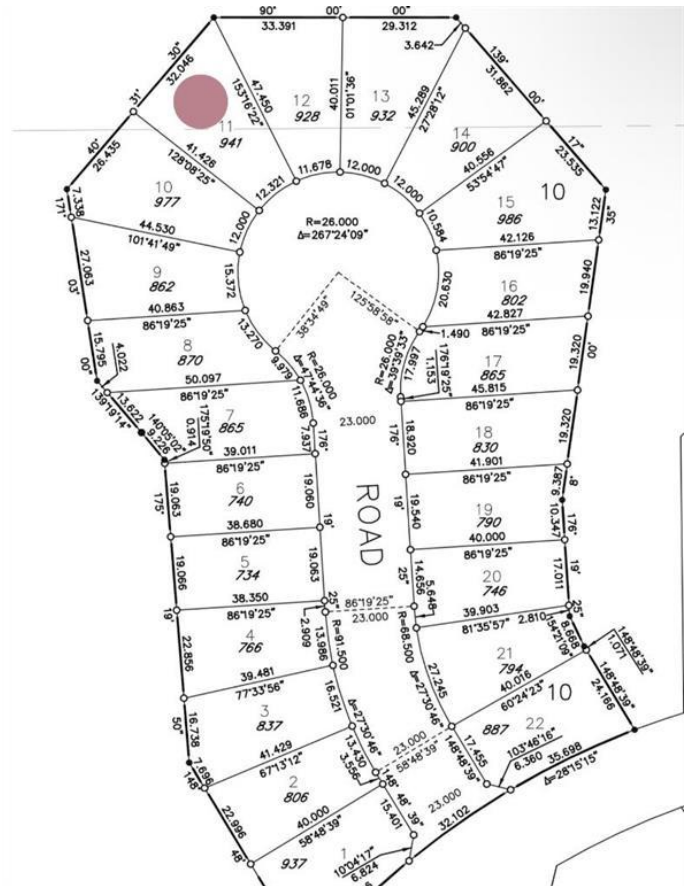
- Peaceful golf course setting with scenic walking paths
- Brand-new playground and a dog park for the whole family
- Space to park your RV™ yes, even your toys get a home
- Discounted golf memberships for residents
- Mountain views just up the hill from the Bow River
- Only 30 minutes to Calgary city limits

Whether you™re dreaming of a bungalow retreat or a two-story showstopper, this is the chance to build exactly what you want, exactly where you want it.

Lots like this don™t come up often in Speargrass. Contact us at Lush Realty today before someone else claims the view.

Essential Information

MLS® # A2243701
Price \$150,000



Bathrooms	0.00
Acres	0.23
Type	Land
Sub-Type	Residential Land
Status	Active

Community Information

Address	141 Speargrass Close
Subdivision	NONE
City	Carseland
County	Wheatland County
Province	Alberta
Postal Code	T0J0M0

Amenities

Amenities	Dog Park, Park, Playground, Golf Course, RV/Boat Storage
-----------	--

Exterior

Lot Description	Pie Shaped Lot, Near Golf Course, On Golf Course
-----------------	--

School Information

District	Golden Hills School Division No. 75
----------	-------------------------------------

Additional Information

Date Listed	July 28th, 2025
Days on Market	59
Zoning	450
HOA Fees	50
HOA Fees Freq.	ANN

Listing Details

Listing Office	RE/MAX Key
----------------	------------

Data is supplied by Pillar 9â„¢ MLS® System. Pillar 9â„¢ is the owner of the copyright in its MLS® System. Data is deemed reliable but is not guaranteed accurate by Pillar 9â„¢. The trademarks MLS®, Multiple Listing Service® and the associated logos are owned by The Canadian Real Estate Association (CREA) and identify the quality of services provided by real estate professionals who are members of CREA. Used under license.