

\$329,900 - 33 Crimson Court, Blackfalds

MLS® #A2241516

\$329,900

3 Bedroom, 3.00 Bathroom, 1,292 sqft
Residential on 0.06 Acres

Cottonwood Meadows, Blackfalds, Alberta

Gorgeous Townhouse located in quiet area of Blackfalds, Built by True-Line Homes, this Townhouse has an upgraded kitchen, Vinyl Plank Flooring, Large Primary Bedroom with full 4 piece ensuite and Walk in Closet. It is in excellent condition and has a Fully Fenced Backyard with large deck!! Immediate possession available. Room in the back for a 14' x 24' Garage!

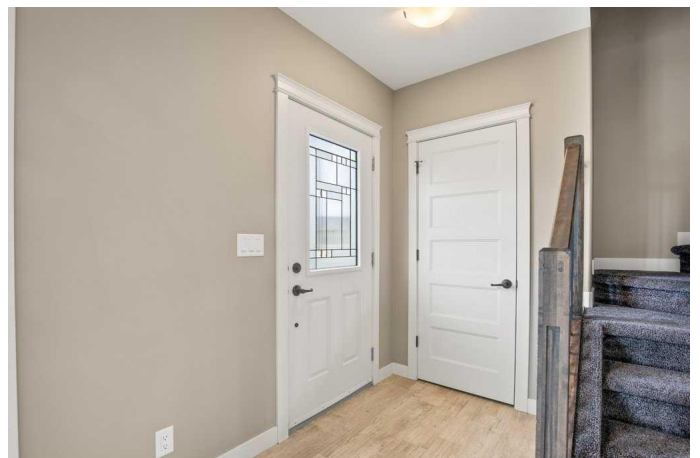
Built in 2014

Essential Information

MLS® #	A2241516
Price	\$329,900
Bedrooms	3
Bathrooms	3.00
Full Baths	2
Half Baths	1
Square Footage	1,292
Acres	0.06
Year Built	2014
Type	Residential
Sub-Type	Row/Townhouse
Style	2 Storey
Status	Active

Community Information

Address	33 Crimson Court
Subdivision	Cottonwood Meadows



City	Blackfalds
County	Lacombe County
Province	Alberta
Postal Code	T4M 0A7

Amenities

Parking Spaces	2
Parking	Parking Pad

Interior

Interior Features	Pantry
Appliances	Dishwasher, Electric Stove, Microwave Hood Fan, Refrigerator, Washer/Dryer, Window Coverings
Heating	Forced Air, Natural Gas
Cooling	None
Has Basement	Yes
Basement	Full, Unfinished

Exterior

Exterior Features	None
Lot Description	Back Lane, Back Yard, Landscaped, Lawn
Roof	Asphalt Shingle
Construction	Vinyl Siding, Wood Frame
Foundation	Poured Concrete

Additional Information

Date Listed	July 19th, 2025
Days on Market	35
Zoning	R2

Listing Details

Listing Office	Realty Executives Alberta Elite
----------------	---------------------------------

Data is supplied by Pillar 9â„¢ MLSÂ® System. Pillar 9â„¢ is the owner of the copyright in its MLSÂ® System. Data is deemed reliable but is not guaranteed accurate by Pillar 9â„¢. The trademarks MLSÂ®, Multiple Listing ServiceÂ® and the associated logos are owned by The Canadian Real Estate Association (CREA) and identify the quality of services provided by real estate professionals who are members of CREA. Used under license.