

\$119,000 - 86, 50228 Range Road 204, Rural Beaver County

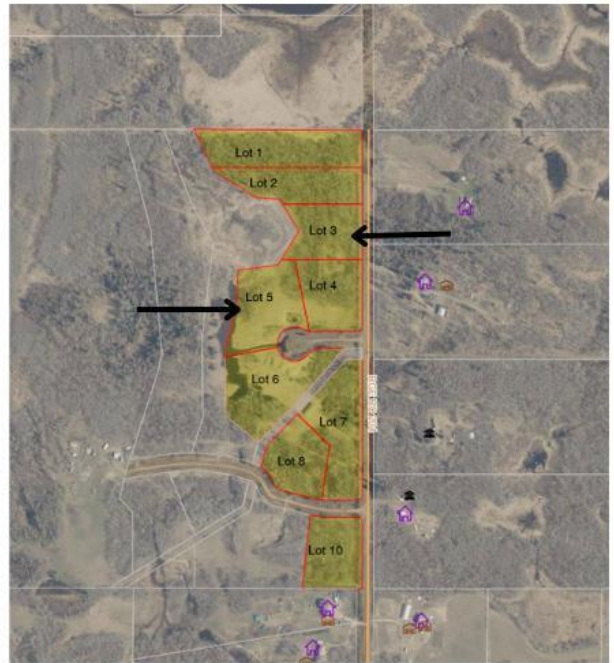
MLS® #A2228179

\$119,000

0 Bedroom, 0.00 Bathroom,
Land on 3.04 Acres

NONE, Rural Beaver County, Alberta

Picturesque Acreage Lot Available! With over 3 acres this remarkable and rare piece of land could be just what you've been waiting for. Easy commute to Sherwood Park, Edmonton, and Camrose. Absolutely breath taking property close to Miquelon Lake And Miquelon Hills Golf Course won't last long. Power and Gas available.



Essential Information

MLS® #	A2228179
Price	\$119,000
Bathrooms	0.00
Acres	3.04
Type	Land
Sub-Type	Residential Land
Status	Active

Community Information

Address	86, 50228 Range Road 204
Subdivision	NONE
City	Rural Beaver County
County	Beaver County
Province	Alberta
Postal Code	T0B 4A0

Additional Information

Date Listed	June 7th, 2025
-------------	----------------

Days on Market 110

Zoning CR

Listing Details

Listing Office CIR Realty

Data is supplied by Pillar 9â,,ç MLSÂ® System. Pillar 9â,,ç is the owner of the copyright in its MLSÂ® System. Data is deemed reliable but is not guaranteed accurate by Pillar 9â,,ç. The trademarks MLSÂ®, Multiple Listing ServiceÂ® and the associated logos are owned by The Canadian Real Estate Association (CREA) and identify the quality of services provided by real estate professionals who are members of CREA. Used under license.