

\$899,900 - 208191 424 Avenue W, Rural Foothills County

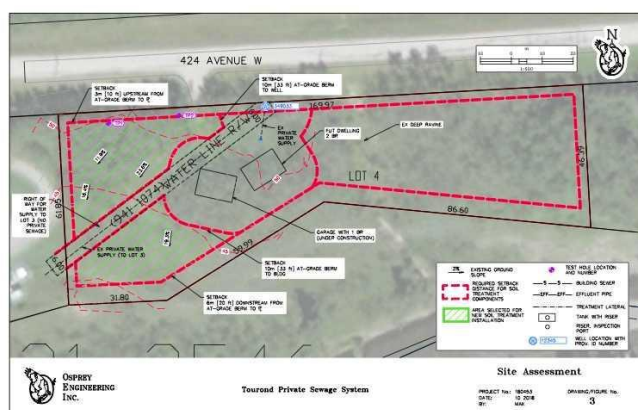
MLS® #A2209017

\$899,900

1 Bedroom, 1.00 Bathroom, 1,385 sqft
Residential on 1.95 Acres

Lineham Crossing, Rural Foothills County,
Alberta

Discover Your Dream Retreat on the Sheep River! Perched atop the stunning Sheep River, this unique property offers breathtaking views that stretch to the horizon, making it feel like you can reach out and touch the majestic Rocky Mountains. Just 3 km west of Turner Valley and a short 17 km drive to Kananaskis Country, this location is perfect for outdoor enthusiasts and those seeking tranquility. The current owner envisioned grand plans but has already created a beautiful carriage house suite above an oversized double garage. Custom-built by Ryan Homes, the exterior boasts durable Hardie Board siding, while the interior welcomes you with a spacious foyer complete with a utility room and laundry area. The 28 x 32 double garage is fully finished, HEATED and insulated, making it ideal for storage, parking, or a workshop. Step into the exquisite carriage house unit above, featuring a southwest-facing deck that offers views so captivating, theyâ€™ll leave you breathless. The open-concept design includes a large primary suite, a stylish kitchen with stainless steel appliances, quartz countertops, and an extra-large pantry, all seamlessly connected to the cozy living area. This property is not just a home; itâ€™s an incredible opportunity! No expense was spared on the water system, shared well and 3300 gallon underground cistern and a mound septic system (2019),



both large enough to accommodate that second residence-did I mention RV pad next to house with power and septic dump. Bonus-power to the gate and attached greenhouse in the back. Whether you envision it as a holding property for your dream home, a charming Airbnb, or a peaceful country getaway from the hustle and bustle of city life, the possibilities are endless. Donâ€™t miss your chance to own this picturesque haven!

Built in 2021

Essential Information

MLS® #	A2209017
Price	\$899,900
Bedrooms	1
Bathrooms	1.00
Full Baths	1
Square Footage	1,385
Acres	1.95
Year Built	2021
Type	Residential
Sub-Type	Detached
Style	2 Storey, Acreage with Residence
Status	Active

Community Information

Address	208191 424 Avenue W
Subdivision	Lineham Crossing
City	Rural Foothills County
County	Foothills County
Province	Alberta
Postal Code	T0L2A0

Amenities

Parking Spaces	4
Parking	Double Garage Attached
# of Garages	2

Interior

Interior Features	No Smoking Home, Pantry, Quartz Counters, Vinyl Windows
Appliances	Electric Stove, Garage Control(s), Microwave Hood Fan, Refrigerator, Washer/Dryer, Window Coverings, Water Softener
Heating	Forced Air, Natural Gas
Cooling	None
Basement	None

Exterior

Exterior Features	Balcony, Garden, Rain Barrel/Cistern(s), RV Hookup
Lot Description	Garden, No Neighbours Behind, Cul-De-Sac, Greenbelt, Irregular Lot, Many Trees, Native Plants, Views
Roof	Asphalt Shingle
Construction	Wood Frame
Foundation	Poured Concrete

Additional Information

Date Listed	April 4th, 2025
Days on Market	25
Zoning	CRES

Listing Details

Listing Office	RE/MAX Complete Realty
----------------	------------------------

Data is supplied by Pillar 9â„¢ MLS® System. Pillar 9â„¢ is the owner of the copyright in its MLS® System. Data is deemed reliable but is not guaranteed accurate by Pillar 9â„¢. The trademarks MLS®, Multiple Listing Service® and the associated logos are owned by The Canadian Real Estate Association (CREA) and identify the quality of services provided by real estate professionals who are members of CREA. Used under license.